

# DAILY TECHNICAL, 14 JULI 2020

**PT PROFINDO SEKURITAS INDONESIA**

**GD PERMATA KUNINGAN LT 19  
JL KUNINGAN MULIA KAV 9C GUNTUR SETIABUDI JAKARTA SELATAN 12980**

**TELP +62 21 8378 0888**

**EMAIL : CUSTOMERSERVICE@PROFINDO.COM**

**WWW.PROFINDO.COM | PROCLICK.PROFINDO.COM**

# JAKARTA COMPOSITE INDEX



## PREVIOUS 13 JULI 2020

CLOSING	5064.447	+0.660%
TRANSACTION	IDR 6.27 TRILLION	
FOREIGN NETT	IDR 40 BIO (SELL)	

## PREDICTION 14 JULI 2020

**BULLISH**  
**RANGE 5020-5139**

MORNING STAR  
STOCHASTIC : DOWNTREND  
MACD : HISTOGRAM POSITIF DAN NETRAL

# TECHNICAL RECOMENDATION



## ANTM – PT ANEKA TAMBANG TBK

CLOSING 13/7/2020 RP 675 (+4.65%)

**BUY**

**TARGET PRICE 750**

**STOPLOSS < 645**

BREAK OUT CUP & HANDLE

STOCHASTIC : UPTREND

MACD : HISTOGRAM POSITIF DAN UPTREND

# TECHNICAL RECOMENDATION



**ERAA – PT ERAJAYA SWASEMBADA TBK**

**CLOSING 13/7/2020 RP 1380 (+4.9%)**

**BUY**

**TARGET PRICE 1805**

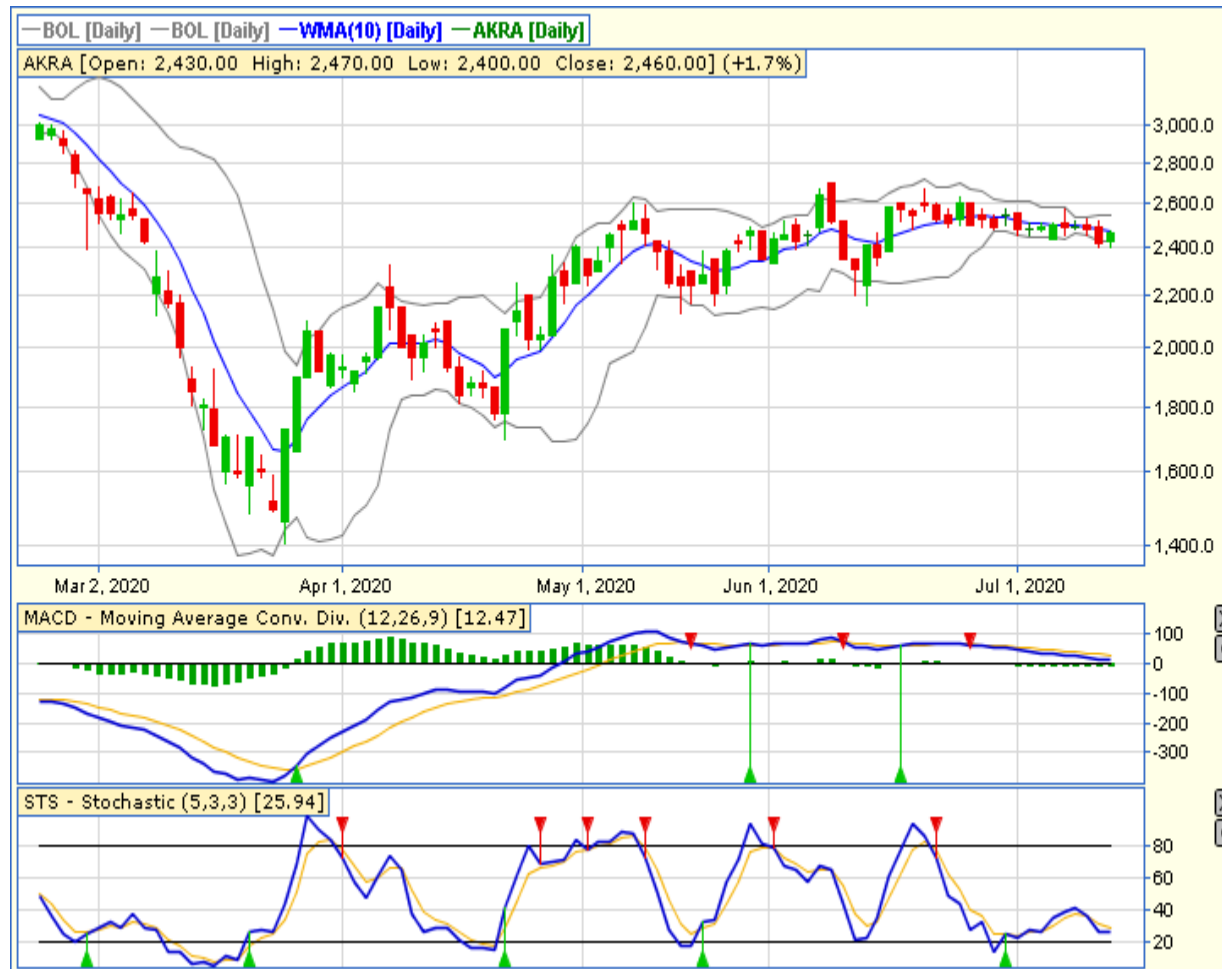
**STOPLOSS < 1290**

**BREAK OUT TRIANGLE**

**STOCHASTIC : UPTREND**

**MACD : HISTOGRAM POSITIF DAN UPTREND**

# TECHNICAL RECOMENDATION



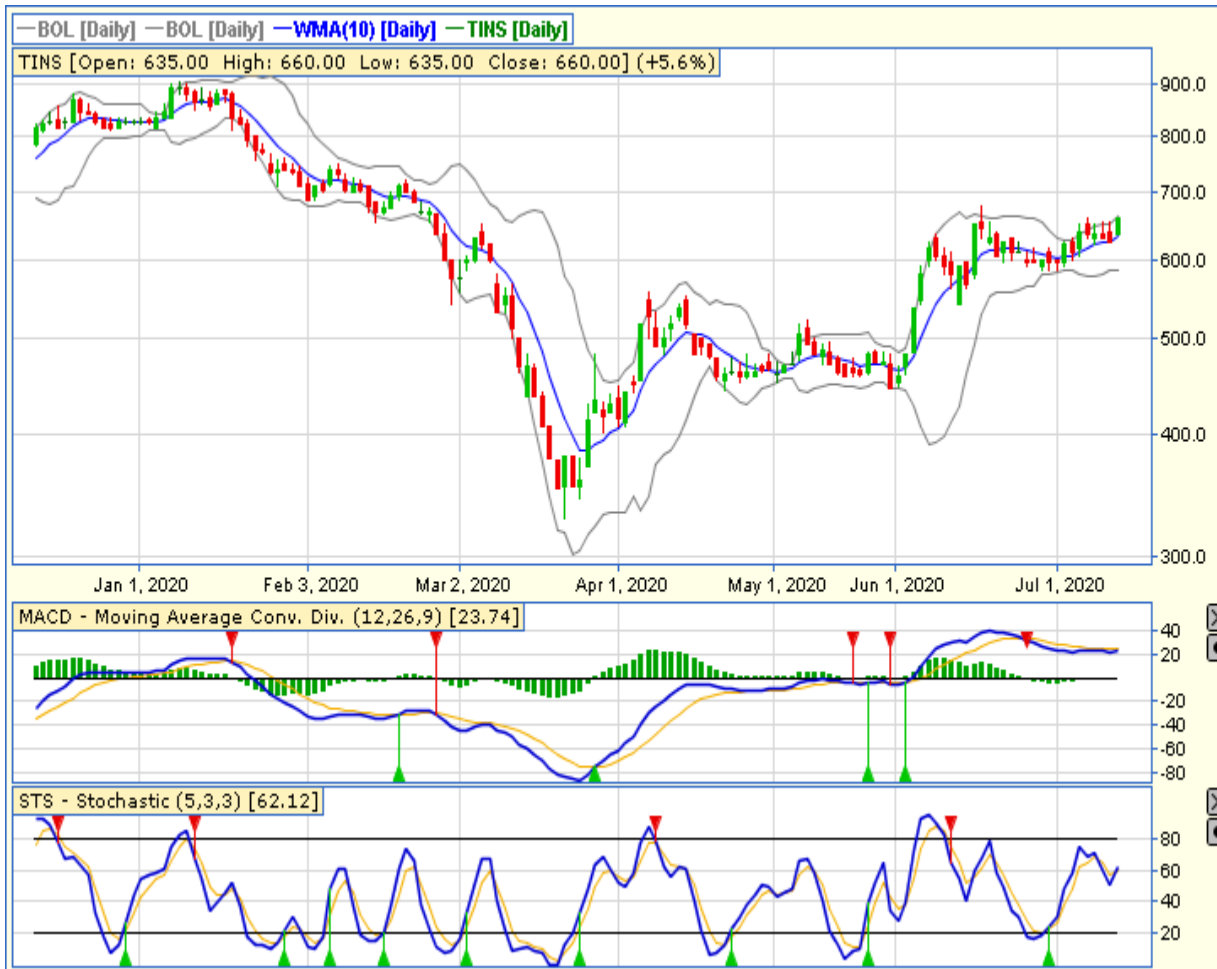
**AKRA – PT AKR CORPORINDO TBK**

**CLOSING 13/7/2020 RP 2460 (+1.7%)**

**SELL ON STRENGTH  
TAKE PROFIT 2570**

**BULLISH HARAMI  
STOCHASTIC : OVERSOLD  
MACD : HISTOGRAM NEGATIF DAN LOWER AREA**

# TECHNICAL RECOMENDATION



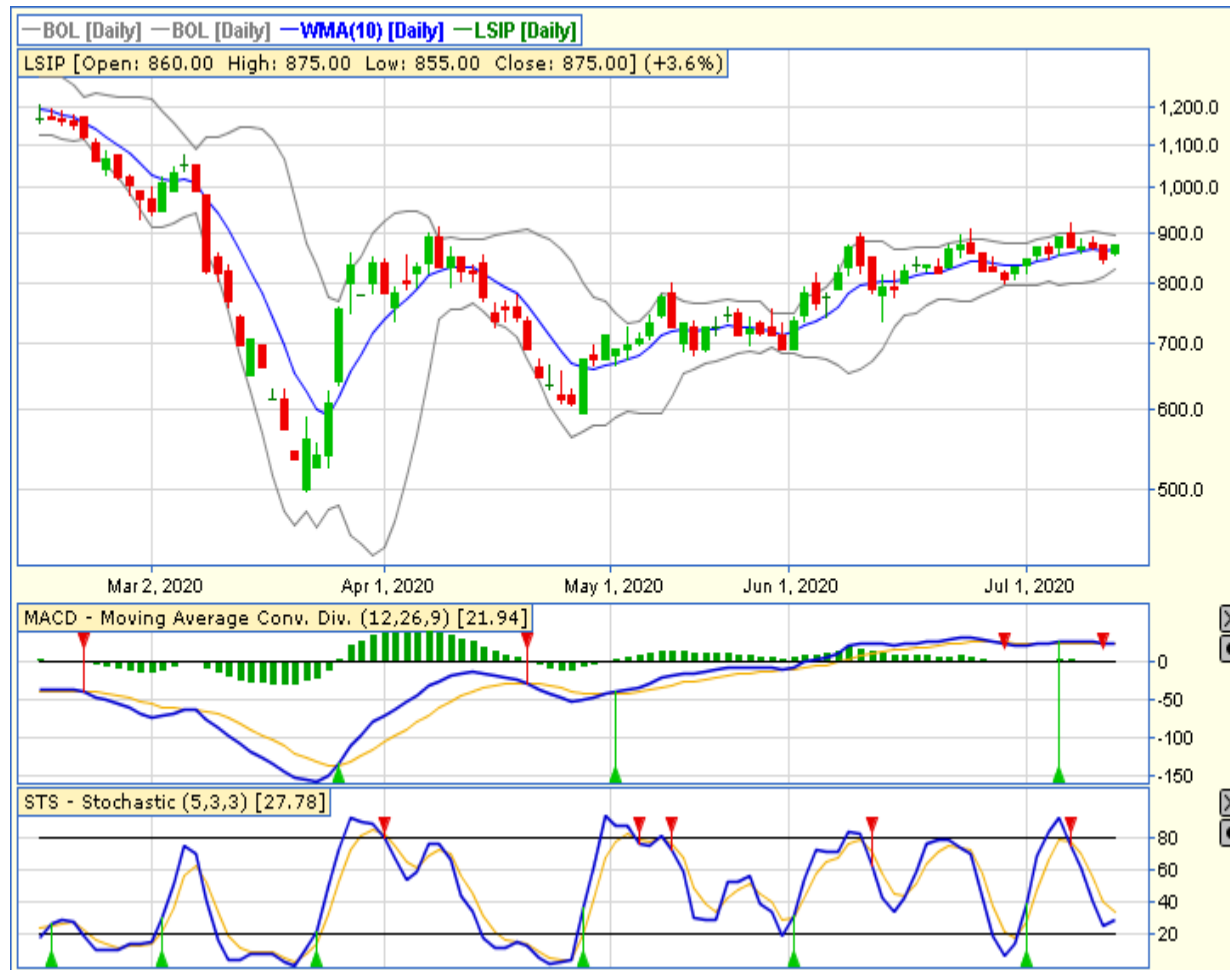
**TINS – PT TIMAH TBK**

**CLOSING 13/7/2020 Rp 660 (+5.6%)**

**SELL ON STRENGTH  
TAKE PROFIT 680**

**BREAK OUT TRIANGLE  
STOCHASTIC : UPTREND  
MACD : HISTOGRAM POSITIF DAN GOLDEN  
CROSS**

# TECHNICAL RECOMENDATION



**LSIP – PT PP LONDON SUMATRA INDONESIA TBK**

**CLOSING 13/7/2020 RP 875 (+3.6%)**

**BUY**

**TARGET PRICE 920**

**STOPLOSS < 855**

**BULLISH HARAMI**

**STOCHASTIC : OVERSOLD**

**MACD : HISTOGRAM NEGATIF MENGECIL DAN  
BERSIAP GOLDEN CROSS**

# TECHNICAL RECOMENDATION



**BJBR – PT BPD JAWA BARAT DAN BANTEN TBK**

**CLOSING 13/7/2020 RP 945 (+7.4%)**

**SELL ON STRENGTH  
TAKE PROFIT 1005**

**BREAK OUT TRIANGLE  
STOCHASTIC : UPTREND  
MACD : HISTOGRAM POSITIF DAN UPTREND**



# RESEARCH TEAM



**YULIANA**

**RESEARCH ANALYST &  
CORPORATE FINANCE**



**DIMAS WP PRATAMA, CSA**

**TECHNICAL ANALYST**

# EQUITY CAPITAL MARKET TEAM



**JESSIE JAMES**

**HEAD OF EQUITY SALES**



**PRASETYO NUGROHO**

**HEAD OF DEALING ROOM**



**GABRIELLA PRATIWY**

**HEAD OF ONLINE TRADING**